

Conexiones Biofarmacéuticas BPE "High Purity" ... 821

Tapas	822
Adaptadores	823
Férulas	824
Codos	824 - 825
Tees	826 - 830
Reducciones	831 - 836

Conexiones Biofarmacéuticas "High Purity" - (BPE)

3 63-03
621

Especificaciones

- Todas las conexiones están fabricadas para cumplir con la última edición de la Norma Internacional ASME BPE para equipos de bioprocesamiento.
- El acero inoxidable 316L cumple en material y dimensiones con todas las especificaciones de soldadura orbital con azufre controlado.

Mercados

- Farmacéutico
- Bioprocesamientos
- Semiconductor
- Cosméticos
- Procesamiento Alimenticio
- Bebidas

Presentación (Embalaje)

Producto Identificado de acuerdo a ASME BPE 2012 DT-10.1

- Job number (Número de trabajo).
- Acero Inoxidable 316L.
- Número de parte.Dixon Sanitary
- Heat number (Número de Colada).
- Código de acabado o pulido de superficie.
- ASME BPE.

Por la especificación, el tamaño de la conexión puede limitar el espacio disponible para el mercado. Cuando eso ocurre, las marcas del final de la lista no se aplican. El número de parte describirá la configuración y tamaño de la parte o pieza.

Certificados MTR (Material Test Report) son incluidos dentro de bolsas de plástico re-sellables junto con cada conexión individualmente. Los MTRs (Material Test Report) son rastreables a través del Job Number (número de trabajo) que se encuentra marcado en cada conexión. Todas las conexiones se surten con tapa (azul o blanca) para evitar daño y contaminación.

Para una fácil identificación cada acabado o pulido tiene un color diferente de tapa plástica.

Acabado PL - SF1...Tapa azul

Acabado PM - SF4...Tapa blanca

Bradford™ High Purity

BioPharm Fittings

316L Stainless Steel Material Test Report

Job Number		AA729							
Bradford™ Part Number	Description	Size		Surface finish					
T2S88-150PL	Automatic Weld 88° Elbow per Table DT-4.1.1-1	1½"		SF1 (20Ra)					

Chemical analysis (%) per ASME BPE 2012 Table MM-2.1 and Section MM-5.1.1

Item	Heat number	C	Mn	P	S	Si	Cr	Ni	Mo	
		0.030	2.00	0.045	0.017	1.00	16.00	10.00	2.00	
1	96GK43	0.017	1.56	0.028	0.011	0.33	16.80	10.05	2.02	min.
										max.

Mechanical Test Results

Item	Yield Strength (0.2%)	Tensile Strength	Elongation	Hardness	Specification
	MPa	MPa	%	HRB	
	170 minimum	485 minimum	35 minimum	90 maximum	
1	327	634	47.0	82	ASTM A269-10

Product of Thailand

We certify that the above is a true copy of the test results issued by the material supplier. This MTR conforms to EN10204-3.1. All fittings supplied by Dixon Sanitary conform to the requirements of the European Union Directive 2002/95/EC on the restriction of the use of certain hazardous substances in electrical and electronic equipment (RoHS).

Bruce Anderson
Technical Director

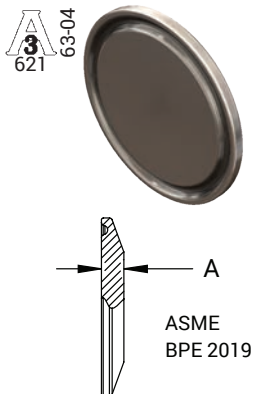
The Right Connection™

Dixon Sanitary
N25 W23040 Paul Rd.
Pewaukee, WI 53072
USA
800-789-1718
bradfordfittings.com

Los MTRs (Material Test Reports) están también disponibles entrando en la página web de Dixon (dixonvalve.com). Solamente digite el número de orden que se localiza en cada conexión.

*Este certificado es ilustrativo

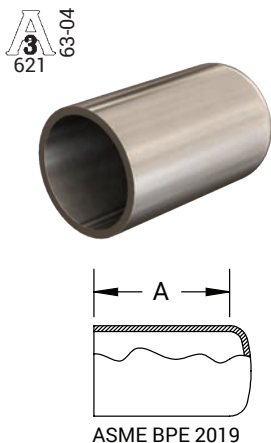
Conexiones Biofarmacéuticas "High Purity"



BPE Tabla DT-4.1.5-2

Tapas Solidas para Extremo - T16AMP

D.E. Tubing	A (in)	Acabado PL - SF1	Acabado PM - SF4
1/2" - 3/4"	1.00	T16AMP-050075PL	T16AMP-050075PM
1" - 1-1/2"	1.99	T16AMP-100150PL	T16AMP-100150PM
2"	2.52	T16AMP-200PL	T16AMP-200PM
2-1/2"	3.05	T16AMP-250PL	T16AMP-250PM
3"	3.58	T16AMP-300PL	T16AMP-300PM
4"	4.69	T16AMP-400PL	T16AMP-400PM
6"	6.56	T16AMP-600PL	T16AMP-600PM



BPE Tabla DT-4.1.5-1

Tapas Soldables - T16W

D.E. Tubing	A (in)	Acabado PL - SF1	Acabado PM - SF4
1/2"	1.50	T16W-050PL	T16W-050PM
3/4"	1.50	T16W-075PL	T16W-075PM
1"	1.50	T16W-100PL	T16W-100PM
1-1/2"	1.50	T16W-150PL	T16W-150PM
2"	1.50	T16W-200PL	T16W-200PM
2-1/2"	1.50	T16W-250PL	T16W-250PM
3"	1.50	T16W-300PL	T16W-300PM
4"	2.00	T16W-400PL	T16W-400PM
6"	2.50	T16W-600PL	T16W-600PM

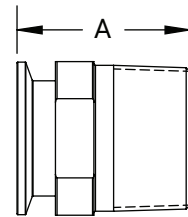
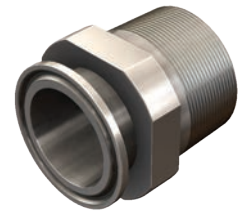
NOTA: Especificaciones BPE 2019.

Acabado PL – SF1.
 D.E. = 32Ra Pulido Mecánico.
 D.I. = 20Ra Pulido Mecánico.

Acabado PM – SF4.
 D.E. = 32Ra Pulido Mecánico.
 D.I. = 15Ra Pulido Mecánico y Electropulido.

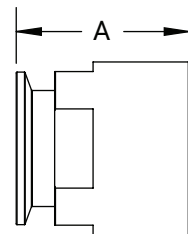
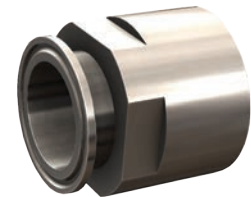
Conexiones Biofarmacéuticas "High Purity"
Adaptador Clamp x Macho NPT- T21MP

Medida Clamp	Rosca NPT	A (in)	Acabado PL - SF1
1/2"	1/4"	2.00	T21MP-050025PL
	3/8"	2.00	T21MP-050375PL
	1/2"	1.63	T21MP-050PL
	3/4"	2.00	T21MP-050075PL
3/4"	1/4"	2.00	T21MP-075025PL
	3/8"	2.00	T21MP-075375PL
	1/2"	2.00	T21MP-075050PL
	3/4"	1.79	T21MP-075PL
1"	1/2"	2.19	T21MP-100050PL
	1"	2.25	T21MP-100PL
1-1/2"	1-1/2"	2.25	T21MP-150PL
2"	2"	2.64	T21MP-200PL
2-1/2"	2-1/2"	2.88	T21MP-250PL
3"	3"	3.07	T21MP-300PL
4"	4"	3.16	T21MP-400PL



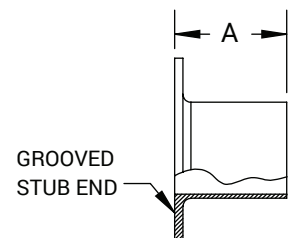
Adaptador Clamp x Hembra NPT- T22MP

Medida Clamp	Rosca NPT	A (in)	Acabado PL - SF1
1/2"	1/8"	1.25	T22MP-050125PL
	1/4"	1.50	T22MP-050025PL
	3/8"	1.50	T22MP-050375PL
	1/2"	1.50	T22MP-050PL
	3/4"	1.63	T22MP-050075PL
3/4"	1/4"	1.50	T22MP-075025PL
	3/8"	1.50	T22MP-075375PL
	1/2"	1.50	T22MP-075050PL
	3/4"	1.63	T22MP-075PL
1"	1"	1.63	T22MP-100PL
1-1/2"	1-1/2"	2.25	T22MP-150PL
2"	2"	2.34	T22MP-200PL
2-1/2"	2-1/2"	2.09	T22MP-250PL
3"	3"	2.19	T22MP-300PL
4"	4"	2.63	T22MP-400PL



Adaptador con Solapa - T14VB

D.E. Tubing	A (in)	Acabado PL - SF1
1/2"	2.00	T14VB-050PL
3/4"	2.00	T14VB-075PL
1"	2.00	T14VB-100PL
1-1/2"	2.00	T14VB-150PL
2"	2.50	T14VB-200PL
2-1/2"	2.50	T14VB-250PL
3"	2.50	T14VB-300PL
4"	2.50	T14VB-400PL
6"	3.00	T14VB-600PL



NOTA: Especificaciones BPE 2019.

Acabado PL – SF1.

D.E. = 32Ra Pulido Mecánico.

D.I. = 20Ra Pulido Mecánico.

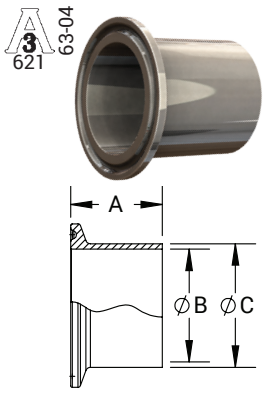
Acabado PM – SF4.

D.E. = 32Ra Pulido Mecánico.

D.I. = 15Ra Pulido Mecánico y Electropulido.

Conexiones Biofarmacéuticas "High Purity"

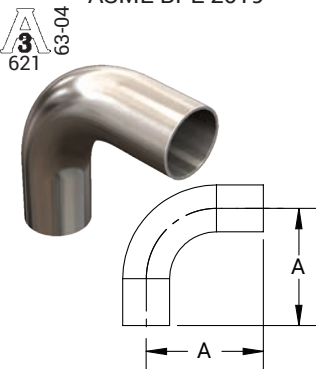
Férulas Soldables Automáticas - TL14AM7



BPE Tabla DT-4.1.4-1
ASME BPE 2019

D.E. Tubing	A (in)	B (in)	C (in)	Acabado PL - SF1	Acabado PM - SF4
1/2"	1.75	0.37	0.50	TL14AM7-050PL	TL14AM7-050PM
3/4"	1.75	0.62	0.75	TL14AM7-075PL	TL14AM7-075PM
1"	1.75	0.87	1.00	TL14AM7-100PL	TL14AM7-100PM
1-1/2"	1.75	1.37	1.50	TL14AM7-150PL	TL14AM7-150PM
2"	2.25	1.87	2.00	TL14AM7-200PL	TL14AM7-200PM
2-1/2"	2.25	2.37	2.50	TL14AM7-250PL	TL14AM7-250PM
3"	2.25	2.87	3.00	TL14AM7-300PL	TL14AM7-300PM
4"	2.25	3.83	4.00	TL14AM7-400PL	TL14AM7-400PM
6"	3.00	5.78	6.00	TL14AM7-600PL	TL14AM7-600PM

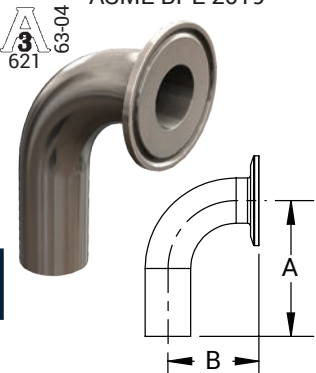
Codo 90° Soldable - T2S



BPE Tabla DT-4.1.1-1
ASME BPE 2019

D.E. Tubing	A (in)	Acabado PL - SF1	Acabado PM - SF4
1/2"	3.00	T2S-050PL	T2S-050PM
3/4"	3.00	T2S-075PL	T2S-075PM
1"	3.00	T2S-100PL	T2S-100PM
1-1/2"	3.75	T2S-150PL	T2S-150PM
2"	4.75	T2S-200PL	T2S-200PM
2-1/2"	5.50	T2S-250PL	T2S-250PM
3"	6.25	T2S-300PL	T2S-300PM
4"	8.00	T2S-400PL	T2S-400PM
6"	11.50	T2S-600PL	T2S-600PM

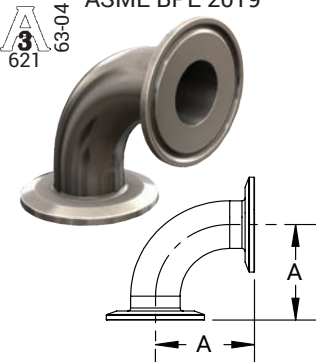
Codo 90° Clamp x Extremo Soldable - T2CM



BPE Tabla DT-4.1.1-2
ASME BPE 2019

D.E. Tubing	A (in)	B (in)	Acabado PL - SF1	Acabado PM - SF4
1/2"	3.00	1.63	T2CM-050PL	T2CM-050PM
3/4"	3.00	1.63	T2CM-075PL	T2CM-075PM
1"	3.00	2.00	T2CM-100PL	T2CM-100PM
1-1/2"	3.75	2.75	T2CM-150PL	T2CM-150PM
2"	4.75	3.50	T2CM-200PL	T2CM-200PM
2-1/2"	5.50	4.25	T2CM-250PL	T2CM-250PM
3"	6.25	5.00	T2CM-300PL	T2CM-300PM
4"	8.00	6.63	T2CM-400PL	T2CM-400PM
6"	11.50	10.50	T2CM-600PL	T2CM-600PM

Codo 90° Clamp x Clamp - T2CMP



D.E. Tubing	A (in)	Acabado PL - SF1	Acabado PM - SF4
1/2"	1.63	T2CMP-050PL	T2CMP-050PM
3/4"	1.63	T2CMP-075PL	T2CMP-075PM
1"	2.00	T2CMP-100PL	T2CMP-100PM
1-1/2"	2.75	T2CMP-150PL	T2CMP-150PM
2"	3.50	T2CMP-200PL	T2CMP-200PM
2-1/2"	4.25	T2CMP-250PL	T2CMP-250PM
3"	5.00	T2CMP-300PL	T2CMP-300PM
4"	6.63	T2CMP-400PL	T2CMP-400PM
6"	10.50	T2CMP-600PL	T2CMP-600PM

NOTA: Especificaciones BPE 2019.

Acabado PL – SF1.
D.E. = 32Ra Pulido Mecánico.
D.I. = 20Ra Pulido Mecánico.

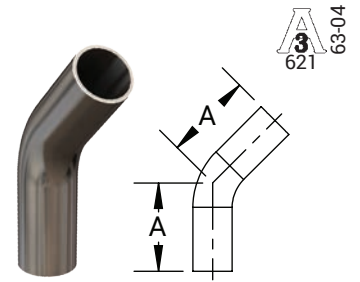
Acabado PM – SF4.
D.E. = 32Ra Pulido Mecánico.
D.I. = 15Ra Pulido Mecánico y Electropulido .

BPE Tabla DT-4.1.1-3
ASME BPE 2019

Conexiones Biofarmacéuticas "High Purity"

Codo 45° Soldable - T2KS

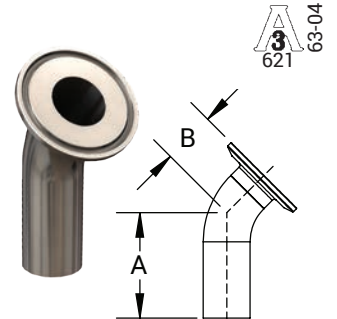
D.E. Tubing	A (in)	Acabado PL - SF1	Acabado PM - SF4
1/2"	2.25	T2KS-050PL	T2KS-050PM
3/4"	2.25	T2KS-075PL	T2KS-075PM
1"	2.25	T2KS-100PL	T2KS-100PM
1-1/2"	2.50	T2KS-150PL	T2KS-150PM
2"	3.00	T2KS-200PL	T2KS-200PM
2-1/2"	3.38	T2KS-250PL	T2KS-250PM
3"	3.63	T2KS-300PL	T2KS-300PM
4"	4.50	T2KS-400PL	T2KS-400PM
6"	6.25	T2KS-600PL	T2KS-600PM



BPE Tabla DT-4.1.1-4
ASME BPE 2019

Codo 45° Clamp x Extremo Soldable - T2KM

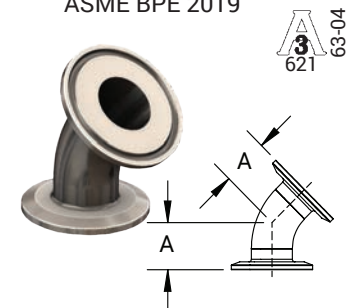
D.E. Tubing.	A (in)	B (in)	Acabado PL - SF1	Acabado PM - SF4
1/2"	2.25	1.00	T2KM-050PL	T2KM-050PM
3/4"	2.25	1.00	T2KM-075PL	T2KM-075PM
1"	2.25	1.13	T2KM-100PL	T2KM-100PM
1-1/2"	2.50	1.44	T2KM-150PL	T2KM-150PM
2"	3.00	1.75	T2KM-200PL	T2KM-200PM
2-1/2"	3.38	2.06	T2KM-250PL	T2KM-250PM
3"	3.63	2.38	T2KM-300PL	T2KM-300PM
4"	4.50	3.13	T2KM-400PL	T2KM-400PM
6"	6.25	5.25	T2KM-600PL	T2KM-600PM



BPE Tabla DT-4.1.1-5
ASME BPE 2019

Codo 45° Clamp x Clamp - T2KMP

D.E. Tubing	A (in)	Acabado PL - SF1	Acabado PM - SF4
1/2"	1.00	T2KMP-050PL	T2KMP-050PM
3/4"	1.00	T2KMP-075PL	T2KMP-075PM
1"	1.13	T2KMP-100PL	T2KMP-100PM
1-1/2"	1.44	T2KMP-150PL	T2KMP-150PM
2"	1.75	T2KMP-200PL	T2KMP-200PM
2-1/2"	2.06	T2KMP-250PL	T2KMP-250PM
3"	2.38	T2KMP-300PL	T2KMP-300PM
4"	3.13	T2KMP-400PL	T2KMP-400PM
6"	5.25	T2KMP-600PL	T2KMP-600PM



BPE Tabla DT-4.1.1-6
ASME BPE 2019

Codo 88° Soldable - T2S88

D.E. Tubing	A (in)	R (in)	Acabado PL - SF1	Acabado PM - SF4
1/2"	1.94	1.06	T2S88-050PL	T2S88-050PM
3/4"	1.98	1.02	T2S88-075PL	T2S88-075PM
1"	1.50	1.50	T2S88-100PL	T2S88-100PM
1-1/2"	1.50	2.25	T2S88-150PL	T2S88-150PM
2"	1.75	3.00	T2S88-200PL	T2S88-200PM
2-1/2"	1.75	3.75	T2S88-250PL	T2S88-250PM
3"	1.75	4.50	T2S88-300PL	T2S88-300PM
4"	2.00	6.00	T2S88-400PL	T2S88-400PM
6"	2.50	9.00	T2S88-600PL	T2S88-600PM



Codo 92° Soldable - T2S92

D.E. Tubing.	A (in)	R (in)	Acabado PL - SF1	Acabado PM - SF4
1/2"	1.94	1.06	T2S92-050PL	T2S92-050PM
3/4"	1.98	1.02	T2S92-075PL	T2S92-075PM
1"	1.50	1.50	T2S92-100PL	T2S92-100PM
1-1/2"	1.50	2.25	T2S92-150PL	T2S92-150PM
2"	1.75	3.00	T2S92-200PL	T2S92-200PM
2-1/2"	1.75	3.75	T2S92-250PL	T2S92-250PM
3"	1.75	4.50	T2S92-300PL	T2S92-300PM
4"	2.00	6.00	T2S92-400PL	T2S92-400PM
6"	2.50	9.00	T2S92-600PL	T2S92-600PM

NOTA: Especificaciones BPE 2019.

Acabado PL – SF1.

D.E. = 32Ra Pulido Mecánico.

D.I. = 20Ra Pulido Mecánico.

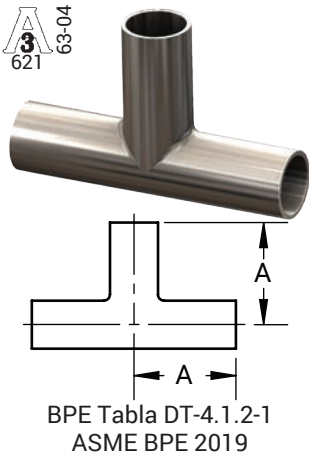
Acabado PM – SF4.

D.E. = 32Ra Pulido Mecánico.

D.I. = 15Ra Pulido Mecánico y Electropulido .

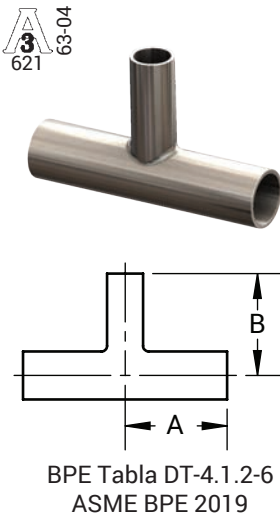
Conexiones Biofarmacéuticas "High Purity"

Tee Extremo Soldable x Extremo Soldable x Extremo Soldable - T7WWW



D.E. Tubing	A (in)	Acabado PL - SF1	Acabado PM - SF4
1/2"	1.88	T7WWW-050PL	T7WWW-050PM
3/4"	2.00	T7WWW-075PL	T7WWW-075PM
1"	2.13	T7WWW-100PL	T7WWW-100PM
1-1/2"	2.38	T7WWW-150PL	T7WWW-150PM
2"	2.88	T7WWW-200PL	T7WWW-200PM
2-1/2"	3.13	T7WWW-250PL	T7WWW-250PM
3"	3.38	T7WWW-300PL	T7WWW-300PM
4"	4.13	T7WWW-400PL	T7WWW-400PM
6"	5.63	T7WWW-600PL	T7WWW-600PM

Tee Reductora Extremo Soldable x Extremo Soldable x Extremo Soldable - T7RWWW



D.E. Tubing	A (in)	B (in)	Acabado PL - SF1	Acabado PM - SF4
3/4" x 1/2"	2.00	2.00	T7RWWW-075050PL	T7RWWW-075050PM
1" X 1/2"	2.13	2.13	T7RWWW-100050PL	T7RWWW-100050PM
1" X 3/4"	2.13	2.13	T7RWWW-10075PL	T7RWWW-10075PM
1-1/2" X 1/2"	2.38	2.38	T7RWWW-150050PL	T7RWWW-150050PM
1-1/2" X 3/4"	2.38	2.38	T7RWWW-150075PL	T7RWWW-150075PM
1-1/2" X 1"	2.38	2.38	T7RWWW-150100PL	T7RWWW-150100PM
2 X 1/2"	2.88	2.63	T7RWWW-200050PL	T7RWWW-200050PM
2" X 3/4"	2.88	2.63	T7RWWW-200075PL	T7RWWW-200075PM
2" X 1"	2.88	2.63	T7RWWW-200100PL	T7RWWW-200100PM
2" X 1-1/2"	2.88	2.63	T7RWWW-200150PL	T7RWWW-200150PM
2-1/2" X 1/2"	3.13	2.88	T7RWWW-250050PL	T7RWWW-250050PM
2-1/2" X 3/4"	3.13	2.88	T7RWWW-250075PL	T7RWWW-250075PM
2-1/2" X 1"	3.13	2.88	T7RWWW-250100PL	T7RWWW-250100PM
2-1/2" X 1-1/2"	3.13	2.88	T7RWWW-250150PL	T7RWWW-250150PM
2-1/2" X 2"	3.13	2.88	T7RWWW-250200PL	T7RWWW-250200PM
3" X 1/2"	3.38	3.13	T7RWWW-300050PL	T7RWWW-300050PM
3" X 3/4"	3.38	3.13	T7RWWW-300075PL	T7RWWW-300075PM
3" X 1"	3.38	3.13	T7RWWW-300100PL	T7RWWW-300100PM
3" X 1-1/2"	3.38	3.13	T7RWWW-300150PL	T7RWWW-300150PM
3" X 2"	3.38	3.13	T7RWWW-300200PL	T7RWWW-300200PM
3" X 2-1/2"	3.38	3.13	T7RWWW-300250PL	T7RWWW-300250PM
4" X 1/2"	4.13	3.63	T7RWWW-400050PL	T7RWWW-400050PM
4" X 3/4"	4.13	3.63	T7RWWW-400075PL	T7RWWW-400075PM
4" X 1"	4.13	3.63	T7RWWW-400100PL	T7RWWW-400100PM
4" X 1-1/2"	4.13	3.63	T7RWWW-400150PL	T7RWWW-400150PM
4" X 2"	4.13	3.88	T7RWWW-400200PL	T7RWWW-400200PM
4" X 2-1/2"	4.13	3.88	T7RWWW-400250PL	T7RWWW-400250PM
4" X 3"	4.13	3.88	T7RWWW-400300PL	T7RWWW-400300PM
6" X 3"	5.63	4.88	T7RWWW-600300PL	T7RWWW-600300PM
6" X 4"	5.63	5.13	T7RWWW-600400PL	T7RWWW-600400PM

NOTA: Especificaciones BPE 2019.

Acabado PL – SF1.
D.E. = 32Ra Pulido Mecánico.
D.I. = 20Ra Pulido Mecánico.

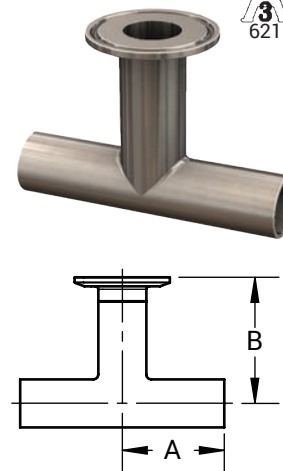
Acabado PM – SF4.
D.E. = 32Ra Pulido Mecánico.
D.I. = 15Ra Pulido Mecánico y Electropulido.

Conexiones Biofarmacéuticas “High Purity”

Tee Extremo Soldable x Extremo Soldable x Clamp - T7WWM

621 63-04

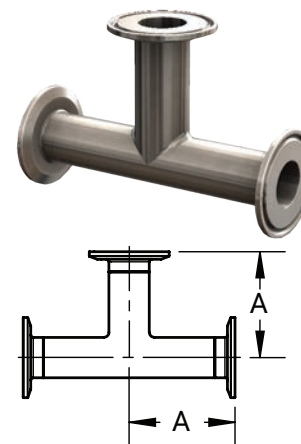
D.E. Tubing	A (in)	B (in)	Acabado PL - SF1	Acabado PM - SF4
1/2"	1.88	2.25	T7WWM-050PL	T7WWM-050PM
3/4"	2.00	2.38	T7WWM-075PL	T7WWM-075PM
1"	2.13	2.63	T7WWM-100PL	T7WWM-100PM
1-1/2"	2.38	2.88	T7WWM-150PL	T7WWM-150PM
2"	2.88	3.38	T7WWM-200PL	T7WWM-200PM
2-1/2"	3.13	3.63	T7WWM-250PL	T7WWM-250PM
3"	3.38	3.88	T7WWM-300PL	T7WWM-300PM
4"	4.13	4.75	T7WWM-400PL	T7WWM-400PM
6"	5.63	7.13	T7WWM-600PL	T7WWM-600PM



Tee Clamp x Clamp x Clamp - T7MP

621 63-04

D.E. Tubing	A (in)	Acabado PL - SF1	Acabado PM - SF4
1/2"	2.38	T7MP-050PL	T7MP-050PM
3/4"	2.50	T7MP-075PL	T7MP-075PM
1"	2.63	T7MP-100PL	T7MP-100PM
1-1/2"	2.88	T7MP-150PL	T7MP-150PM
2"	3.38	T7MP-200PL	T7MP-200PM
2-1/2"	3.63	T7MP-250PL	T7MP-250PM
3"	3.88	T7MP-300PL	T7MP-300PM
4"	4.75	T7MP-400PL	T7MP-400PM
6"	7.13	T7MP-600PL	T7MP-600PM



BPE Tabla DT-4.1.2-4
ASME BPE 2019

NOTA: Especificaciones BPE 2019.
Acabado PL – SF1.
D.E. = 32Ra Pulido Mecánico.
D.I. = 20Ra Pulido Mecánico.

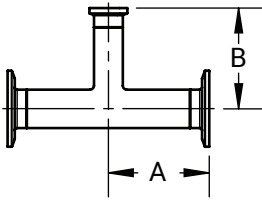
Acabado PM – SF4.
D.E. = 32Ra Pulido Mecánico.
D.I. = 15Ra Pulido Mecánico y Electropulido.



Conexiones Biofarmacéuticas "High Purity"

Tee Reductora Clamp x Clamp x Clamp - T7RMP

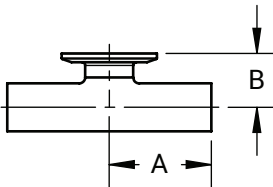
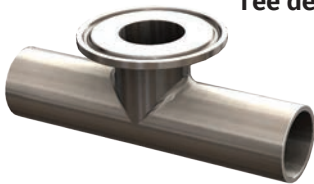
3 63-04
621



BPE Tabla DT-4.1.2-8
ASME BPE 2019

D.E. Tubing	A (in)	B (in)	Acabado PL - SF1	Acabado PM - SF4
3/4" x 1/2"	2.50	2.50	T7RMP-075050PL	T7RMP-075050PM
1" x 1/2"	2.63	2.63	T7RMP-100050PL	T7RMP-100050PM
1" x 3/4"	2.63	2.63	T7RMP-100075PL	T7RMP-100075PM
1-1/2" x 1/2"	2.88	2.88	T7RMP-150050PL	T7RMP-150050PM
1-1/2" x 3/4"	2.88	2.88	T7RMP-150075PL	T7RMP-150075PM
1-1/2" x 1"	2.88	2.88	T7RMP-150100PL	T7RMP-150100PM
2" x 1/2"	3.38	3.13	T7RMP-200050PL	T7RMP-200050PM
2" x 3/4"	3.38	3.13	T7RMP-200075PL	T7RMP-200075PM
2" x 1"	3.38	3.13	T7RMP-200100PL	T7RMP-200100PM
2" x 1-1/2"	3.38	3.13	T7RMP-200150PL	T7RMP-200150PM
2-1/2" x 1/2"	3.63	3.38	T7RMP-250050PL	T7RMP-250050PM
2-1/2" x 3/4"	3.63	3.38	T7RMP-250075PL	T7RMP-250075PM
2-1/2" x 1"	3.63	3.38	T7RMP-250100PL	T7RMP-250100PM
2-1/2" x 1-1/2"	3.63	3.38	T7RMP-250150PL	T7RMP-250150PM
2-1/2" x 2"	3.63	3.38	T7RMP-250200PL	T7RMP-250200PM
3" x 1/2"	3.88	3.63	T7RMP-300050PL	T7RMP-300050PM
3" x 3/4"	3.88	3.63	T7RMP-300075PL	T7RMP-300075PM
3" x 1"	3.88	3.63	T7RMP-300100PL	T7RMP-300100PM
3" x 1-1/2"	3.88	3.63	T7RMP-300150PL	T7RMP-300150PM
3" x 2"	3.88	3.63	T7RMP-300200PL	T7RMP-300200PM
3" x 2-1/2"	3.88	3.63	T7RMP-300250PL	T7RMP-300250PM
4" x 1/2"	4.75	4.13	T7RMP-400050PL	T7RMP-400050PM
4" x 3/4"	4.75	4.13	T7RMP-400075PL	T7RMP-400075PM
4" x 1"	4.75	4.13	T7RMP-400100PL	T7RMP-400100PM
4" x 1-1/2"	4.75	4.13	T7RMP-400150PL	T7RMP-400150PM
4" x 2"	4.75	4.38	T7RMP-400200PL	T7RMP-400200PM
4" x 2-1/2"	4.75	4.38	T7RMP-400250PL	T7RMP-400250PM
4" x 3"	4.75	4.38	T7RMP-400300PL	T7RMP-400300PM
6" x 3"	7.13	5.38	T7RMP-600300PL	T7RMP-600300PM
6" x 4"	7.13	5.75	T7RMP-600400PL	T7RMP-600400PM

3 63-04
621



BPE Tabla DT-4.1.2-2
ASME BPE 2019

Tee de Salida Corta Extremo Soldable x Extremo Soldable x Clamp - T7WWMS

D.E. Tubing	A (in)	B (in)	Acabado PL - SF1	Acabado PM - SF4
1/2"	1.88	1.00	T7WWMS-050PL	T7WWMS-050PM
3/4"	2.00	1.13	T7WWMS-075PL	T7WWMS-075PM
1"	2.13	1.13	T7WWMS-100PL	T7WWMS-100PM
1-1/2"	2.38	1.38	T7WWMS-150PL	T7WWMS-150PM
2"	2.88	1.63	T7WWMS-200PL	T7WWMS-200PM
2-1/2"	3.13	1.88	T7WWMS-250PL	T7WWMS-250PM
3"	3.38	2.13	T7WWMS-300PL	T7WWMS-300PM
4"	4.13	2.75	T7WWMS-400PL	T7WWMS-400PM
6"	5.63	4.63	T7WWMS-600PL	T7WWMS-600PM

NOTA: Especificaciones BPE 2019.

Acabado PL – SF1.
D.E. = 32Ra Pulido Mecánico.
D.I. = 20Ra Pulido Mecánico.

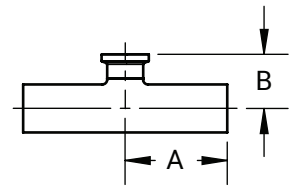
Acabado PM – SF4.
D.E. = 32Ra Pulido Mecánico.
D.I. = 15Ra Pulido Mecánico y Electropulido.

Conexiones Biofarmacéuticas "High Purity"

Tee Reductora de Salida Corta Extremo Soldable x Extremo Soldable x Clamp - T7RWWMS

A
3
621
63-04

D.E. Tubing	A (in)	B (in)	Acabado PL - SF1	Acabado PM - SF4
3/4" x 1/2"	2.00	1.00	T7RWWMS075050PL	T7RWWMS075050PM
1" x 1/2"	2.13	1.13	T7RWWMS100050PL	T7RWWMS100050PM
1" x 3/4"	2.13	1.13	T7RWWMS100075PL	T7RWWMS100075PM
1-1/2" x 1/2"	2.38	1.38	T7RWWMS150050PL	T7RWWMS150050PM
1-1/2" x 3/4"	2.38	1.38	T7RWWMS150075PL	T7RWWMS150075PM
1-1/2" x 1"	2.38	1.38	T7RWWMS150100PL	T7RWWMS150100PM
2" x 1/2"	2.88	1.63	T7RWWMS200050PL	T7RWWMS200050PM
2" x 3/4"	2.88	1.63	T7RWWMS200075PL	T7RWWMS200075PM
2" x 1"	2.88	1.63	T7RWWMS200100PL	T7RWWMS200100PM
2" x 1-1/2"	2.88	1.63	T7RWWMS200150PL	T7RWWMS200150PM
2-1/2" x 1/2"	3.13	1.88	T7RWWMS250050PL	T7RWWMS250050PM
2-1/2" x 3/4"	3.13	1.88	T7RWWMS250075PL	T7RWWMS250075PM
2-1/2" x 1"	3.13	1.88	T7RWWMS250100PL	T7RWWMS250100PM
2-1/2" x 1-1/2"	3.13	1.88	T7RWWMS250150PL	T7RWWMS250150PM
2-1/2" x 2"	3.13	1.88	T7RWWMS250200PL	T7RWWMS250200PM
3" x 1/2"	3.38	2.13	T7RWWMS300050PL	T7RWWMS300050PM
3" x 3/4"	3.38	2.13	T7RWWMS300075PL	T7RWWMS300075PM
3" x 1"	3.38	2.13	T7RWWMS300100PL	T7RWWMS300100PM
3" x 1-1/2"	3.38	2.13	T7RWWMS300150PL	T7RWWMS300150PM
3" x 2"	3.38	2.13	T7RWWMS300200PL	T7RWWMS300200PM
3" x 2-1/2"	3.38	2.13	T7RWWMS300250PL	T7RWWMS300250PM
4" x 1/2"	4.13	2.63	T7RWWMS400050PL	T7RWWMS400050PM
4" x 3/4"	4.13	2.63	T7RWWMS400075PL	T7RWWMS400075PM
4" x 1"	4.13	2.63	T7RWWMS400100PL	T7RWWMS400100PM
4" x 1-1/2"	4.13	2.63	T7RWWMS400150PL	T7RWWMS400150PM
4" x 2"	4.13	2.63	T7RWWMS400200PL	T7RWWMS400200PM
4" x 2-1/2"	4.13	2.63	T7RWWMS400250PL	T7RWWMS400250PM
4" x 3"	4.13	2.63	T7RWWMS400300PL	T7RWWMS400300PM
6" x 3"	5.63	3.63	T7RWWMS600300PL	T7RWWMS600300PM
6" x 4"	5.63	3.75	T7RWWMS600400PL	T7RWWMS600400PM

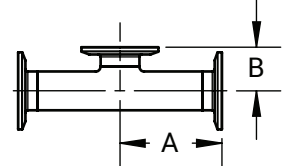


BPE Tabla DT-4.1.2-7
ASME BPE 2019

Tee de Salida Corta Clamp x Clamp x Clamp - T7MPS

A
3
621
63-04

D.E. Tubing	A (in)	B (in)	Acabado PL - SF1	Acabado PM - SF4
1/2"	2.38	1.00	T7MPS-050PL	T7MPS-050PM
3/4"	2.50	1.13	T7MPS-075PL	T7MPS-075PM
1"	2.63	1.13	T7MPS-100PL	T7MPS-100PM
1-1/2"	2.88	1.38	T7MPS-150PL	T7MPS-150PM
2"	3.38	1.63	T7MPS-200PL	T7MPS-200PM
2-1/2"	3.63	1.88	T7MPS-250PL	T7MPS-250PM
3"	3.88	2.13	T7MPS-300PL	T7MPS-300PM
4"	4.75	2.75	T7MPS-400PL	T7MPS-400PM
6"	7.13	4.63	T7MPS-600PL	T7MPS-600PM



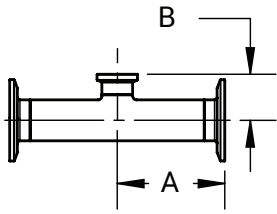
BPE Tabla DT-4.1.2-5
ASME BPE 2019

NOTA: Especificaciones BPE 2019.
Acabado PL – SF1.
D.E. = 32Ra Pulido Mecánico.
D.I. = 20Ra Pulido Mecánico.

Acabado PM – SF4.
D.E. = 32Ra Pulido Mecánico.
D.I. = 15Ra Pulido Mecánico y Electropulido.

Conexiones Biofarmacéuticas "High Purity"

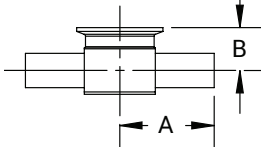
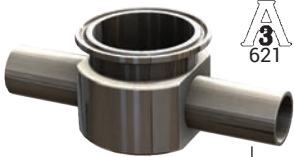
Tee Reductora de Salida Corta Clamp x Clamp x Clamp - T7RMPS



BPE Tabla DT-4.1.2-9
ASME BPE 2019

D.E. Tubing	A (in)	B (in)	Acabado PL - SF1	Acabado PM - SF4
3/4" x 1/2"	2.50	1.00	T7RMPS-075050PL	T7RMPS-075050PM
1" x 1/2"	2.63	1.13	T7RMPS-100050PL	T7RMPS-100050PM
1" x 3/4"	2.63	1.13	T7RMPS-100075PL	T7RMPS-100075PM
1-1/2" x 1/2"	2.88	1.38	T7RMPS-150050PL	T7RMPS-150050PM
1-1/2" x 3/4"	2.88	1.38	T7RMPS-150075PL	T7RMPS-150075PM
1-1/2" x 1"	2.88	1.38	T7RMPS-150100PL	T7RMPS-150100PM
2" x 1/2"	3.38	1.63	T7RMPS-200050PL	T7RMPS-200050PM
2" x 3/4"	3.38	1.63	T7RMPS-200075PL	T7RMPS-200075PM
2" x 1"	3.38	1.63	T7RMPS-200100PL	T7RMPS-200100PM
2" x 1-1/2"	3.38	1.63	T7RMPS-200150PL	T7RMPS-200150PM
2-1/2" x 1/2"	3.63	1.88	T7RMPS-250050PL	T7RMPS-250050PM
2-1/2" x 3/4"	3.63	1.88	T7RMPS-250075PL	T7RMPS-250075PM
2-1/2" x 1"	3.63	1.88	T7RMPS-250100PL	T7RMPS-250100PM
2-1/2" x 1-1/2"	3.63	1.88	T7RMPS-250150PL	T7RMPS-250150PM
2-1/2" x 2"	3.63	1.88	T7RMPS-250200PL	T7RMPS-250200PM
3" x 1/2"	3.88	2.13	T7RMPS-300050PL	T7RMPS-300050PM
3" x 3/4"	3.88	2.13	T7RMPS-300075PL	T7RMPS-300075PM
3" x 1"	3.88	2.13	T7RMPS-300100PL	T7RMPS-300100PM
3" x 1-1/2"	3.88	2.13	T7RMPS-300150PL	T7RMPS-300150PM
3" x 2"	3.88	2.13	T7RMPS-300200PL	T7RMPS-300200PM
3" x 2-1/2"	3.88	2.13	T7RMPS-300250PL	T7RMPS-300250PM
4" x 1/2"	4.75	2.63	T7RMPS-400050PL	T7RMPS-400050PM
4" x 3/4"	4.75	2.63	T7RMPS-400075PL	T7RMPS-400075PM
4" x 1"	4.75	2.63	T7RMPS-400100PL	T7RMPS-400100PM
4" x 1-1/2"	4.75	2.63	T7RMPS-400150PL	T7RMPS-400150PM
4" x 2"	4.75	2.63	T7RMPS-400200PL	T7RMPS-400200PM
4" x 2-1/2"	4.75	2.63	T7RMPS-400250PL	T7RMPS-400250PM
4" x 3"	4.75	2.63	T7RMPS-400300PL	T7RMPS-400300PM
6" x 3"	7.13	3.63	T7RMPS-600300PL	T7RMPS-600300PM
6" x 4"	7.13	3.75	T7RMPS-600400PL	T7RMPS-600400PM

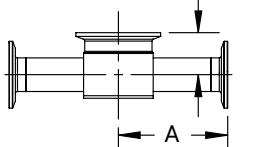
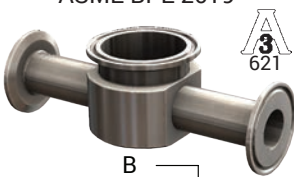
Tee de Instrumentación Extremo Soldable x Extremo Soldable x Clamp - T7IWWMS



BPE Tabla DT-4.1.2-10
ASME BPE 2019

D.E. Tubing	A (in)	B (in)	Acabado PL - SF1	Acabado PM - SF4
1/2" x 1-1/2"	2.50	.88	T7IWWMS050150PL	T7IWWMS050150PM
3/4" x 1-1/2"	2.50	1.00	T7IWWMS075150PL	T7IWWMS075150PM
1" x 1-1/2"	2.50	1.13	T7IWWMS100150PL	T7IWWMS100150PM
1/2" x 2"	2.75	1.00	T7IWWMS050200PL	T7IWWMS050200PM
3/4" x 2"	2.75	1.13	T7IWWMS075200PL	T7IWWMS075200PM
1" x 2"	2.75	1.25	T7IWWMS100200PL	T7IWWMS100200PM
1-1/2" x 2"	2.75	1.50	T7IWWMS150200PL	T7IWWMS150200PM

Tee de Instrumentación Clamp x Clamp x Clamp - T7IMPS



BPE Tabla DT-4.1.2-11
ASME BPE 2019

D.E. Tubing	A (in)	B (in)	Acabado PL - SF1	Acabado PM - SF4
1/2" x 1-1/2"	3.00	.88	T7IMPS-050150PL	T7IMPS-050150PM
3/4" x 1-1/2"	3.00	1.00	T7IMPS-075150PL	T7IMPS-075150PM
1" x 1-1/2"	3.00	1.13	T7IMPS-100150PL	T7IMPS-100150PM
1/2" x 2"	3.25	1.00	T7IMPS-050200PL	T7IMPS-050200PM
3/4" x 2"	3.25	1.13	T7IMPS-075200PL	T7IMPS-075200PM
1" x 2"	3.25	1.25	T7IMPS-100200PL	T7IMPS-100200PM
1-1/2" x 2"	3.25	1.50	T7IMPS150200PL	T7IMPS150200PM

NOTA: Especificaciones BPE 2019.

Acabado PL - SF1.

D.E. = 32Ra Pulido Mecánico.

D.I. = 20Ra Pulido Mecánico.

Acabado PM - SF4.

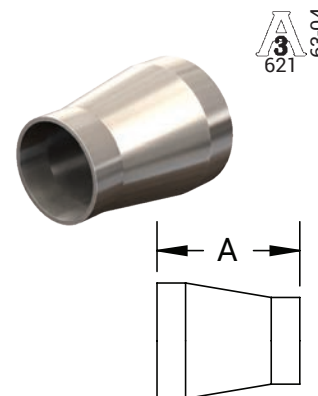
D.E. = 32Ra Pulido Mecánico.

D.I. = 15Ra Pulido Mecánico y Electropolido.

Conexiones Biofarmacéuticas “High Purity”

Reductor Concéntrico Extremo Soldable x Extremo Soldable – 2211C

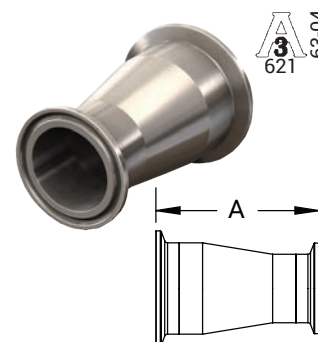
Medidas	A (in)	Acabado PL - SF1	Acabado PM - SF4
3/4" x 1/2"	2.13	2211CBB075050F1	2211CBB075050F4
1" x 1/2"	2.50	2211CBB100050F1	2211CBB100050F4
1" x 3/4"	2.13	2211CBB100075F1	2211CBB100075F4
1-1/2" x 3/4"	3.00	2211CBB150075F1	2211CBB150075F4
1-1/2" x 1"	2.50	2211CBB150100F1	2211CBB150100F4
2" x 1"	3.38	2211CBB200100F1	2211CBB200100F4
2" x 1-1/2"	2.50	2211CBB200150F1	2211CBB200150F4
2-1/2" x 1-1/2"	3.38	2211CBB250150F1	2211CBB250150F4
2-1/2" x 2"	2.50	2211CBB250200F1	2211CBB250200F4
3" x 1-1/2"	4.25	2211CBB300150F1	2211CBB300150F4
3" x 2"	3.38	2211CBB300200F1	2211CBB300200F4
3" x 2-1/2"	2.63	2211CBB300250F1	2211CBB300250F4
4" x 2"	5.13	2211CBB400200F1	2211CBB400200F4
4" x 2-1/2"	4.25	2211CBB400250F1	2211CBB400250F4
4" x 3"	3.88	2211CBB400300F1	2211CBB400300F4
6" x 3"	7.25	2211CBB600300F1	2211CBB600300F4
6" x 4"	5.63	2211CBB600400F1	2211CBB600400F4



BPE Tabla DT-4.1.3-1
ASME BPE 2019

Reductor Concéntrico Clamp x Clamp – 2221C

Medidas	A (in)	Acabado PL - SF1	Acabado PM - SF4
3/4" x 1/2"	3.13	2221CBB075050F1	2221CBB075050F4
1" x 1/2"	3.50	2221CBB100050F1	2221CBB100050F4
1" x 3/4"	3.13	2221CBB100075F1	2221CBB100075F4
1-1/2" x 3/4"	4.00	2221CBB150075F1	2221CBB150075F4
1-1/2" x 1"	3.50	2221CBB150100F1	2221CBB150100F4
2" x 1"	4.38	2221CBB200100F1	2221CBB200100F4
2" x 1-1/2"	3.50	2221CBB200150F1	2221CBB200150F4
2-1/2" x 1-1/2"	4.38	2221CBB250150F1	2221CBB250150F4
2-1/2" x 2"	3.50	2221CBB250200F1	2221CBB250200F4
3" x 1-1/2"	5.25	2221CBB300150F1	2221CBB300150F4
3" x 2"	4.38	2221CBB300200F1	2221CBB300200F4
3" x 2-1/2"	3.63	2221CBB300250F1	2221CBB300250F4
4" x 2"	6.25	2221CBB400200F1	2221CBB400200F4
4" x 2-1/2"	5.38	2221CBB400250F1	2221CBB400250F4
4" x 3"	5.00	2221CBB400300F1	2221CBB400300F4
6" x 3"	8.50	2221CBB600300F1	2221CBB600300F4
6" x 4"	7.00	2221CBB600400F1	2221CBB600400F4



BPE Tabla DT-4.1.3-3
ASME BPE 2019

NOTA: Especificaciones BPE 2019.

Acabado PL – SF1.

D.E. = 32Ra Pulido Mecánico.

D.I. = 20Ra Pulido Mecánico.

Acabado PM – SF4.

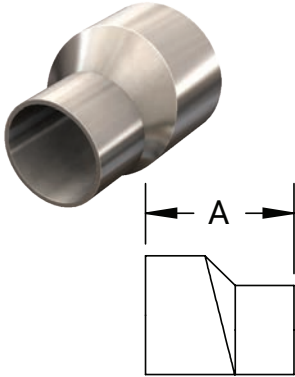
D.E. = 32Ra Pulido Mecánico.

D.I. = 15Ra Pulido Mecánico y Electropulido.

Conexiones Biofarmacéuticas "High Purity"

Reductor Excéntrico Extremo Soldable x Extremo Soldable – 2211E

621 63-04

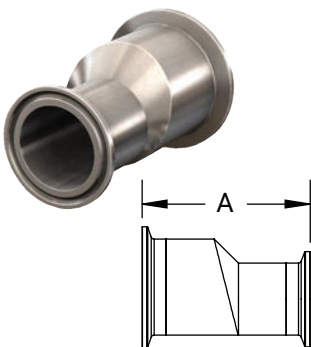


BPE Tabla DT-4.1.3-1
ASME BPE 2019

Medidas	A (in)	Acabado PL - SF1	Acabado PM - SF4
3/4" x 1/2"	2.13	2211EBB075050F1	2211EBB075050F4
1" x 1/2"	2.50	2211EBB100050F1	2211EBB100050F4
1" x 3/4"	2.13	2211EBB100075F1	2211EBB100075F4
1-1/2" x 3/4"	3.00	2211EBB150075F1	2211EBB150075F4
1-1/2" x 1"	2.50	2211EBB150100F1	2211EBB150100F4
2" x 1"	3.38	2211EBB200100F1	2211EBB200100F4
2" x 1-1/2"	2.50	2211EBB200150F1	2211EBB200150F4
2-1/2" x 1-1/2"	3.38	2211EBB250150F1	2211EBB250150F4
2-1/2" x 2"	2.50	2211EBB250200F1	2211EBB250200F4
3" x 1-1/2"	4.25	2211EBB300150F1	2211EBB300150F4
3" x 2"	3.38	2211EBB300200F1	2211EBB300200F4
3" x 2-1/2"	2.63	2211EBB300250F1	2211EBB300250F4
4" x 2"	5.13	2211EBB400200F1	2211EBB400200F4
4" x 2-1/2"	4.25	2211EBB400250F1	2211EBB400250F4
4" x 3"	3.88	2211EBB400300F1	2211EBB400300F4
6" x 3"	7.25	2211EBB600300F1	2211EBB600300F4
6" x 4"	5.63	2211EBB600400F1	2211EBB600400F4

Reductor Excéntrico Clamp x Clamp – 2221E

621 63-04



BPE Tabla DT-4.1.3-3
ASME BPE 2019

Medidas	A (in)	Acabado PL - SF1	Acabado PM - SF4
3/4" x 1/2"	3.13	2221EBB075050F1	2221EBB075050F4
1" x 1/2"	3.50	2221EBB100050F1	2221EBB100050F4
1" x 3/4"	3.13	2221EBB100075F1	2221EBB100075F4
1-1/2" x 3/4"	4.00	2221EBB150075F1	2221EBB150075F4
1-1/2" x 1"	3.50	2221EBB150100F1	2221EBB150100F4
2" x 1"	4.38	2221EBB200100F1	2221EBB200100F4
2" x 1-1/2"	3.50	2221EBB200150F1	2221EBB200150F4
2-1/2" x 1-1/2"	4.38	2221EBB250150F1	2221EBB250150F4
2-1/2" x 2"	3.50	2221EBB250200F1	2221EBB250200F4
3" x 1-1/2"	5.25	2221EBB300150F1	2221EBB300150F4
3" x 2"	4.38	2221EBB300200F1	2221EBB300200F4
3" x 2-1/2"	3.63	2221EBB300250F1	2221EBB300250F4
4" x 2"	6.25	2221EBB400200F1	2221EBB400200F4
4" x 2-1/2"	5.38	2221EBB400250F1	2221EBB400250F4
4" x 3"	5.00	2221EBB400300F1	2221EBB400300F4
6" x 3"	8.50	2221EBB600300F1	2221EBB600300F4
6" x 4"	7.00	2221EBB600400F1	2221EBB600400F4

NOTA: Especificaciones BPE 2019.

Acabado PL – SF1.

D.E. = 32Ra Pulido Mecánico.

D.I. = 20Ra Pulido Mecánico.

Acabado PM – SF4.

D.E. = 32Ra Pulido Mecánico.

D.I. = 15Ra Pulido Mecánico y Electropulido.

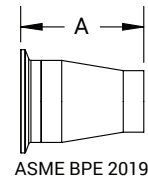
Conexiones Biofarmacéuticas “High Purity”

Reductor Concéntrico Clamp X Extremo Soldable - 2226C

D.E. Tubing.	A (in)	Acabado PL - SF1	Acabado PM - SF4
3/4" x 1/2"	2.63	2226CBB075050F1	2226CBB075050F4
1" x 1/2"	3.00	2226CBB100050F1	2226CBB100050F4
1" x 3/4"	2.63	2226CBB100075F1	2226CBB100075F4
1-1/2" x 3/4"	3.50	2226CBB150075F1	2226CBB150075F4
1-1/2" x 1"	3.00	2226CBB150100F1	2226CBB150100F4
2" x 1"	3.88	2226CBB200100F1	2226CBB200100F4
2" x 1-1/2"	3.00	2226CBB200150F1	2226CBB200150F4
2-1/2" x 1-1/2"	3.88	2226CBB250150F1	2226CBB250150F4
2-1/2" x 2"	3.00	2226CBB250200F1	2226CBB250200F4
3" x 1-1/2"	4.75	2226CBB300150F1	2226CBB300150F4
3" x 2"	3.88	2226CBB300200F1	2226CBB300200F4
3" x 2-1/2"	3.13	2226CBB300250F1	2226CBB300250F4
4" x 2"	5.75	2226CBB400200F1	2226CBB400200F4
4" x 2-1/2"	4.88	2226CBB400250F1	2226CBB400250F4
4" x 3"	4.50	2226CBB400300F1	2226CBB400300F4



ASME BPE 2019
621 63-04

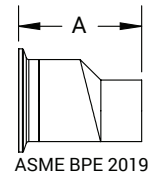


Reductor Excéntrico Clamp X Weld Eccentric Reducers - 2226E

D.E. Tubing.	A (in)	Acabado PL - SF1	Acabado PM - SF4
3/4" x 1/2"	2.63	2226EBB075050F1	2226EBB075050F4
1" x 1/2"	3.00	2226EBB100050F1	2226EBB100050F4
1" x 3/4"	2.63	2226EBB100075F1	2226EBB100075F4
1-1/2" x 3/4"	3.50	2226EBB150075F1	2226EBB150075F4
1-1/2" x 1"	3.00	2226EBB150100F1	2226EBB150100F4
2" x 1"	3.88	2226EBB200100F1	2226EBB200100F4
2" x 1-1/2"	3.00	2226EBB200150F1	2226EBB200150F4
2-1/2" x 1-1/2"	3.88	2226EBB250150F1	2226EBB250150F4
2-1/2" x 2"	3.00	2226EBB250200F1	2226EBB250200F4
3" x 1-1/2"	4.75	2226EBB300150F1	2226EBB300150F4
3" x 2"	3.88	2226EBB300200F1	2226EBB300200F4
3" x 2-1/2"	3.13	2226EBB300250F1	2226EBB300250F4
4" x 2"	5.75	2226EBB400200F1	2226EBB400200F4
4" x 2-1/2"	4.88	2226EBB400250F1	2226EBB400250F4
4" x 3"	4.50	2226EBB400300F1	2226EBB400300F4



ASME BPE 2019
621 63-04



NOTA: Especificaciones BPE 2019.

Acabado PL – SF1.

D.E. = 32Ra Pulido Mecánico.

D.I. = 20Ra Pulido Mecánico.

Acabado PM – SF4.

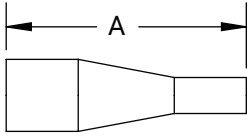
D.E. = 32Ra Pulido Mecánico.

D.I. = 15Ra Pulido Mecánico y Electropulido.

Conexiones Biofarmacéuticas "High Purity"

Reductor Concéntrico Extremo Soldable x Extremo Soldable - T31W

3 63-04
621

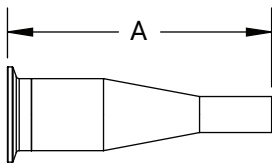


BPE Tabla DT-4.1.3-1(a)

D.E. Tubing	A (in)	Acabado PL - SF1	Acabado PM - SF4
3/4" x 1/2"	4.00	T31W-075050PL	T31W-075050PM
1" x 1/2"	4.50	T31W-100050PL	T31W-100050PM
1" x 3/4"	4.00	T31W-100075PL	T31W-100075PM
1-1/2" x 1/2"	5.50	T31W-150050PL	T31W-150050PM
1-1/2" x 3/4"	5.00	T31W-150075PL	T31W-150075PM
1-1/2" x 1"	5.00	T31W-150100PL	T31W-150100PM
2" x 1/2"	7.75	T31W-200050PL	T31W-200050PM
2" x 3/4"	7.25	T31W-200075PL	T31W-200075PM
2" x 1"	7.25	T31W-200100PL	T31W-200100PM
2" x 1-1/2"	5.25	T31W-200150PL	T31W-200150PM
2-1/2" x 1/2"	9.75	T31W-250050PL	T31W-250050PM
2-1/2" x 3/4"	9.25	T31W-250075PL	T31W-250075PM
2-1/2" x 1"	9.25	T31W-250100PL	T31W-250100PM
2-1/2" x 1-1/2"	7.25	T31W-250150PL	T31W-250150PM
2-1/2" x 2"	5.50	T31W-250200PL	T31W-250200PM
3" x 1"	11.25	T31W-300100PL	T31W-300100PM
3" x 1-1/2"	9.25	T31W-300150PL	T31W-300150PM
3" x 2"	7.50	T31W-300200PL	T31W-300200PM
3" x 2-1/2"	5.50	T31W-300250PL	T31W-300250PM
4" x 1"	15.50	T31W-400100PL	T31W-400100PM
4" x 1-1/2"	13.50	T31W-400150PL	T31W-400150PM
4" x 2"	11.75	T31W-400200PL	T31W-400200PM
4" x 2-1/2"	9.75	T31W-400250PL	T31W-400250PM
4" x 3"	7.75	T31W-400300PL	T31W-400300PM
6" x 3"	10.00	T31W-600300PL	T31W-600300PM
6" x 4"	10.00	T31W-600400PL	T31W-600400PM

Reductor Concéntrico Clamp x Extremo Soldable - T31M

3 63-04
621



BPE Tabla DT-4.1.3-2(a)

D.E. Tubing.	A (in)	Acabado PL - SF1	Acabado PM - SF4
3/4" x 1/2"	3.00	T31M-075050PL	T31M-075050PM
1" x 1/2"	3.50	T31M-100050PL	T31M-100050PM
1" x 3/4"	3.00	T31M-100075PL	T31M-100075PM
1-1/2" x 1/2"	4.50	T31M-150050PL	T31M-150050PM
1-1/2" x 3/4"	4.00	T31M-150075PL	T31M-150075PM
1-1/2" x 1"	4.00	T31M-150100PL	T31M-150100PM
2" x 1/2"	6.50	T31M-200050PL	T31M-200050PM
2" x 3/4"	6.00	T31M-200075PL	T31M-200075PM
2" x 1"	6.00	T31M-200100PL	T31M-200100PM
2" x 1-1/2"	4.00	T31M-200150PL	T31M-200150PM
2-1/2" x 1/2"	8.50	T31M-250050PL	T31M-250050PM
2-1/2" x 3/4"	8.00	T31M-250075PL	T31M-250075PM
2-1/2" x 1"	8.00	T31M-250100PL	T31M-250100PM
2-1/2" x 1-1/2"	6.00	T31M-250150PL	T31M-250150PM
2-1/2" x 2"	4.25	T31M-250200PL	T31M-250200PM
3" x 1"	10.00	T31M-300100PL	T31M-300100PM
3" x 1-1/2"	8.00	T31M-300150PL	T31M-300150PM
3" x 2"	6.25	T31M-300200PL	T31M-300200PM
3" x 2-1/2"	4.25	T31M-300250PL	T31M-300250PM
4" x 1"	14.13	T31M-400100PL	T31M-400100PM
4" x 1-1/2"	12.13	T31M-400150PL	T31M-400150PM
4" x 2"	10.38	T31M-400200PL	T31M-400200PM
4" x 2-1/2"	8.38	T31M-400250PL	T31M-400250PM
4" x 3"	6.38	T31M-400300PL	T31M-400300PM
6" x 3"	9.00	T31M-600300PL	T31M-600300PM
6" x 4"	9.00	T31M-600400PL	T31M-600400PM

NOTA: Especificaciones BPE 2019.

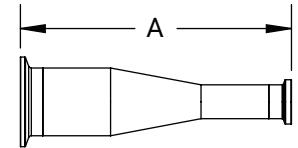
Acabado PL – SF1.
D.E. = 32Ra Pulido Mecánico.
D.I. = 20Ra Pulido Mecánico.

Acabado PM – SF4.
D.E. = 32Ra Pulido Mecánico.
D.I. = 15Ra Pulido Mecánico y Electropulido.

Conexiones Biofarmacéuticas "High Purity"
Reductor Concéntrico Clamp x Clamp - T3114MP

D.E. Tubing.	A (in)	Acabado PL - SF1	Acabado PM - SF4
3/4" x 1/2"	2.00	T3114MP075050PL	T3114MP075050PM
1" x 1/2"	2.50	T3114MP100050PL	T3114MP100050PM
1" x 3/4"	2.00	T3114MP100075PL	T3114MP100075PM
1-1/2" x 1/2"	3.50	T3114MP150050PL	T3114MP150050PM
1-1/2" x 3/4"	3.00	T3114MP150075PL	T3114MP150075PM
1-1/2" x 1"	3.00	T3114MP150100PL	T3114MP150100PM
2" x 1/2"	5.50	T3114MP200050PL	T3114MP200050PM
2" x 3/4"	5.00	T3114MP200075PL	T3114MP200075PM
2" x 1"	5.00	T3114MP200100PL	T3114MP200100PM
2" x 1-1/2"	3.00	T3114MP200150PL	T3114MP200150PM
2-1/2" x 1/2"	7.50	T3114MP250050PL	T3114MP250050PM
2-1/2" x 3/4"	7.00	T3114MP250075PL	T3114MP250075PM
2-1/2" x 1"	7.00	T3114MP250100PL	T3114MP250100PM
2-1/2" x 1-1/2"	5.00	T3114MP250150PL	T3114MP250150PM
2-1/2" x 2"	3.00	T3114MP250200PL	T3114MP250200PM
3" x 1"	9.00	T3114MP300100PL	T3114MP300100PM
3" x 1-1/2"	7.00	T3114MP300150PL	T3114MP300150PM
3" x 2"	5.00	T3114MP300200PL	T3114MP300200PM
3" x 2-1/2"	3.00	T3114MP300250PL	T3114MP300250PM
4" x 1"	13.13	T3114MP400100PL	T3114MP400100PM
4" x 1-1/2"	11.13	T3114MP400150PL	T3114MP400150PM
4" x 2"	9.13	T3114MP400200PL	T3114MP400200PM
4" x 2-1/2"	7.13	T3114MP400250PL	T3114MP400250PM
4" x 3"	5.13	T3114MP400300PL	T3114MP400300PM
6" x 3"	7.50	T3114MP600300PL	T3114MP600300PM
6" x 4"	7.63	T3114MP600400PL	T3114MP600400PM

A3 621 63-04

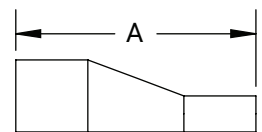


BPE Tabla DT-4.1.3-3(a)

Reductor Excéntrico Extremo Soldable x Extremo Soldable - T32W

D.E. Tubing.	A (in)	Acabado PL - SF1	Acabado PM - SF4
3/4" x 1/2"	4.00	T32W-075050PL	T32W-075050PM
1" x 1/2"	4.50	T32W-100050PL	T32W-100050PM
1" x 3/4"	4.00	T32W-100075PL	T32W-100075PM
1-1/2" x 1/2"	5.50	T32W-150050PL	T32W-150050PM
1-1/2" x 3/4"	5.00	T32W-150075PL	T32W-150075PM
1-1/2" x 1"	5.00	T32W-150100PL	T32W-150100PM
2" x 1/2"	7.75	T32W-200050PL	T32W-200050PM
2" x 3/4"	7.25	T32W-200075PL	T32W-200075PM
2" x 1"	7.25	T32W-200100PL	T32W-200100PM
2" x 1-1/2"	5.25	T32W-200150PL	T32W-200150PM
2-1/2" x 1/2"	9.75	T32W-250050PL	T32W-250050PM
2-1/2" x 3/4"	9.25	T32W-250075PL	T32W-250075PM
2-1/2" x 1"	9.25	T32W-250100PL	T32W-250100PM
2-1/2" x 1-1/2"	7.25	T32W-250150PL	T32W-250150PM
2-1/2" x 2"	5.50	T32W-250200PL	T32W-250200PM
3" x 1"	11.25	T32W-300100PL	T32W-300100PM
3" x 1-1/2"	9.25	T32W-300150PL	T32W-300150PM
3" x 2"	7.50	T32W-300200PL	T32W-300200PM
3" x 2-1/2"	5.50	T32W-300250PL	T32W-300250PM
4" x 1"	15.50	T32W-400100PL	T32W-400100PM
4" x 1-1/2"	13.50	T32W-400150PL	T32W-400150PM
4" x 2"	11.75	T32W-400200PL	T32W-400200PM
4" x 2-1/2"	9.75	T32W-400250PL	T32W-400250PM
4" x 3"	7.75	T32W-400300PL	T32W-400300PM
6" x 3"	9.75	T32W-600300PL	T32W-600300PM
6" x 4"	10.00	T32W-600400PL	T32W-600400PM

A3 621 63-04



BPE Tabla DT-4.1.3-1(a)

NOTA: Especificaciones BPE 2019.

Acabado PL – SF1.

D.E. = 32Ra Pulido Mecánico.

D.I. = 20Ra Pulido Mecánico.

Acabado PM – SF4.

D.E. = 32Ra Pulido Mecánico.

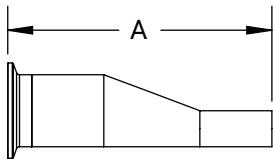
D.I. = 15Ra Pulido Mecánico y Electropulido.

Conexiones Biofarmacéuticas "High Purity"

Reductor Excéntrico Clamp x Extremo Soldable - T32M



63-04



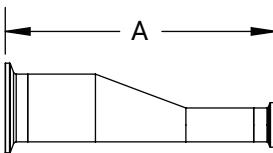
BPE Tabla DT-4.1.3-2(a)

D.E. Tubing.	A (in)	Acabado PL - SF1	Acabado PM - SF4
3/4" x 1/2"	3.00	T32M-075050PL	T32M-075050PM
1" x 1/2"	3.50	T32M-100050PL	T32M-100050PM
1" x 3/4"	3.00	T32M-100075PL	T32M-100075PM
1-1/2" x 1/2"	4.50	T32M-150050PL	T32M-150050PM
1-1/2" x 3/4"	4.00	T32M-150075PL	T32M-150075PM
1-1/2" x 1"	4.00	T32M-150100PL	T32M-150100PM
2" x 1/2"	6.50	T32M-200050PL	T32M-200050PM
2" x 3/4"	6.00	T32M-200075PL	T32M-200075PM
2" x 1"	6.00	T32M-200100PL	T32M-200100PM
2" x 1-1/2"	4.00	T32M-200150PL	T32M-200150PM
2-1/2" x 1/2"	8.50	T32M-250050PL	T32M-250050PM
2-1/2" x 3/4"	8.00	T32M-250075PL	T32M-250075PM
2-1/2" x 1"	8.00	T32M-250100PL	T32M-250100PM
2-1/2" x 1-1/2"	6.00	T32M-250150PL	T32M-250150PM
2-1/2" x 2"	4.25	T32M-250200PL	T32M-250200PM
3" x 1"	10.00	T32M-300100PL	T32M-300100PM
3" x 1-1/2"	8.00	T32M-300150PL	T32M-300150PM
3" x 2"	6.25	T32M-300200PL	T32M-300200PM
3" x 2-1/2"	4.25	T32M-300250PL	T32M-300250PM
4" x 1"	14.13	T32M-400100PL	T32M-400100PM
4" x 1-1/2"	12.13	T32M-400150PL	T32M-400150PM
4" x 2"	10.38	T32M-400200PL	T32M-400200PM
4" x 2-1/2"	8.38	T32M-400250PL	T32M-400250PM
4" x 3"	6.38	T32M-400300PL	T32M-400300PM
6" x 3"	8.75	T32M-600300PL	T32M-600300PM
6" x 4"	9.00	T32M-600400PL	T32M-600400PM

Reductor Excéntrico Clamp x Clamp - T3214MP



63-04



BPE Tabla DT-4.1.3-3(a)

D.E. Tubing.	A (in)	Acabado PL - SF1	Acabado PM - SF4
3/4" x 1/2"	2.00	T3214MP075050PL	T3214MP075050PM
1" x 1/2"	2.50	T3214MP100050PL	T3214MP100050PM
1" x 3/4"	2.00	T3214MP100075PL	T3214MP100075PM
1-1/2" x 1/2"	3.50	T3214MP150050PL	T3214MP150050PM
1-1/2" x 3/4"	3.00	T3214MP150075PL	T3214MP150075PM
1-1/2" x 1"	3.00	T3214MP150100PL	T3214MP150100PM
2" x 1/2"	5.50	T3214MP200050PL	T3214MP200050PM
2" x 3/4"	5.00	T3214MP200075PL	T3214MP200075PM
2" x 1"	5.00	T3214MP200100PL	T3214MP200100PM
2" x 1-1/2"	3.00	T3214MP200150PL	T3214MP200150PM
2-1/2" x 1/2"	7.50	T3214MP250050PL	T3214MP250050PM
2-1/2" x 3/4"	7.00	T3214MP250075PL	T3214MP250075PM
2-1/2" x 1"	7.00	T3214MP250100PL	T3214MP250100PM
2-1/2" x 1-1/2"	5.00	T3214MP250150PL	T3214MP250150PM
2-1/2" x 2"	3.00	T3214MP250200PL	T3214MP250200PM
3" x 1"	9.00	T3214MP300100PL	T3214MP300100PM
3" x 1-1/2"	7.00	T3214MP300150PL	T3214MP300150PM
3" x 2"	5.00	T3214MP300200PL	T3214MP300200PM
3" x 2-1/2"	3.00	T3214MP300250PL	T3214MP300250PM
4" x 1"	13.13	T3214MP400100PL	T3214MP400100PM
4" x 1-1/2"	11.13	T3214MP400150PL	T3214MP400150PM
4" x 2"	9.13	T3214MP400200PL	T3214MP400200PM
4" x 2-1/2"	7.13	T3214MP400250PL	T3214MP400250PM
4" x 3"	5.13	T3214MP400300PL	T3214MP400300PM
6" x 3"	7.63	T3214MP600300PL	T3214MP600300PM
6" x 4"	7.63	T3214MP600400PL	T3214MP600400PM

NOTA: Especificaciones BPE 2019.

Acabado PL – SF1.
D.E. = 32Ra Pulido Mecánico.
D.I. = 20Ra Pulido Mecánico.

Acabado PM – SF4.
D.E. = 32Ra Pulido Mecánico.
D.I. = 15Ra Pulido Mecánico y Electropulido.